



# 4MM SPC FLOORING

*Built to last with  
easy maintainance*

# WHO WE ARE



GEN SERIES

## a new generation in flooring

shaping up  
our smart lives.

EraFlor is the premium in-house brand from L&T Marketing Sdn Bhd, a leading name in the Malaysian flooring industry with three decades of rich experience.

As a brand committed to responsible business practices, EraFlor SPC flooring is trusted by homeowners and architects alike and can be found in residential and commercial spaces throughout Peninsular Malaysia.

As part of our continuous mission to provide reputable quality flooring to business partners and consumers, we are delighted to announce the launch of the all new EraFlor *genSeries*

EraFlor *genSeries* features a 4mm SPC core thickness, carrying forward the enduring hallmarks of the 5mm EVO Series - now with a more accessible price point without sacrificing the quality that EraFlor is known for.



# WOOD COLLECTION

## SPC RIGID CORE FLOORING

### WOOD COLLECTION

Specifications	Product Dimension	1220mm x 180mm x 4mm
	Panel Feature	Natural SPC Core, 4-Sided Micro Bevel
	Surface Texture	Embossed
	Wear Layer	0.3mm
	Product Density	2000 Kg/m <sup>3</sup>
Packaging Details	1 Box	12 pcs (2.635 m <sup>2</sup> / 28.36 sqft) - 22.50 Kg / Box
	1 Pallet	50 bxs (131.75 m <sup>2</sup> / 1418 sqft) - 1125 Kg / Pallet

Note: Colors shown might have slight difference compared to actual products.



ESW 401

Mocha  
Chestnut

Note: Colors shown might have slight difference compared to actual products.



ESW 402

Smoky  
Oak

Note: Colors shown might have slight difference compared to actual products.



ESW 403

# Khaki Oak

Note: Colors shown might have slight difference compared to actual products.



ESW 404

Pecan  
Oak

Note: Colors shown might have slight difference compared to actual products.

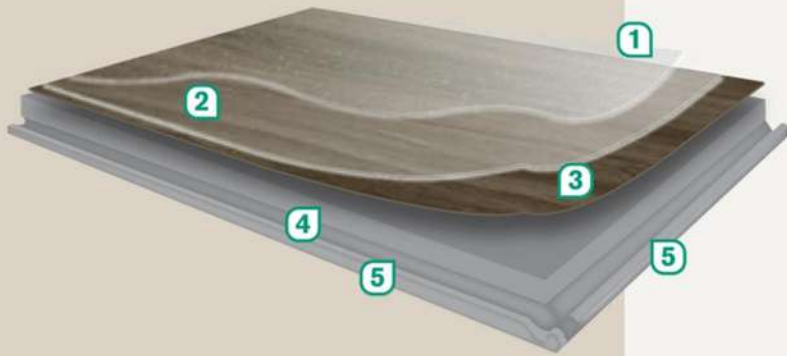


ESW 405

Aspen  
Ash



## COMPONENTS



- 1 UV Coating**  
Enhanced durability, easy care and maintenance.
- 2 Clear Wear Layer**  
Transparent wear layer provides excellent resistance to stain, scuffs and abrasions.
- 3 Printed Decorative Film**  
High resolution printed film delivers vivid effects in realistic and natural appearance.
- 4 SPC Core**  
100% Termiteproof SPC core, dimensional stable, strong and durable.
- 5 Locking System**  
Easy Click Installation System

## WHY ERAFLOR?



**Water Proof  
Core Materials**



**Lifetime  
Termite  
Warranty**



**Eco Friendly with  
0% Formaldehyde  
Emission**



**Flame  
Retardant**



**Wear  
Resistant**



**Stain  
Resistant**



**Easy  
to Install**

## WARRANTY

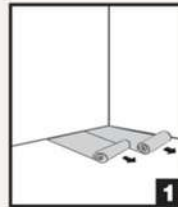
- **Lifetime** Termite Resistant Warranty
- **Up to 1 years\*** for moderate commercial application
- **Up to 3 years\*** for residential application

\*(Subject to stipulated terms & conditions.)

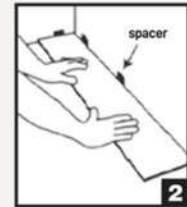
The subfloor surface must be clean from any debris, dry, smoothly screeded and must be even. Any uneven subfloor must undergo with the self - levelling process.

For more information such as subfloor preparation, site condition requirements, installation methods, maintenance requirements, etc., please refer to the EraFlor packaging.

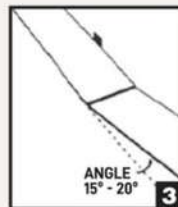
## INSTALLATION INSTRUCTIONS



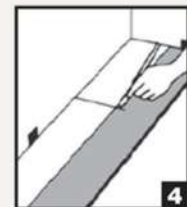
**1 Prepare Floor.**  
Underlay on the dry and leveled subfloor.



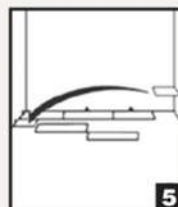
**2 Start at a corner.**  
Place first plank with tongue side facing wall. Use spacers to maintain an expansion space of 8mm between wall and flooring



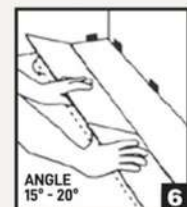
**3 Insert 2nd plank's end tongue to 1st plank's end groove at an angle of 15° to 20°.** The plank will click into place when lowered. Line up edges carefully. Planks should be flat to the floor.



**4 For the last plank of a row, flip a full plank to its under side and place beside the row. Measure and mark the required length. Use a ruler and utility knife to score the plank and snap off. Insert as previous diagram.**



**5 Begin next row with the last cut off piece from the previous row to stagger the pattern.**



**6 To start second row, assemble your entire row on the subfloor before attaching it to the first row. To attach, tilt and push the side tongue into the side groove of the first row at an angle of 15° to 20°. Lower and click into place lining the edges up carefully. Continue laying remaining planks in this manner.**



**7 To fit the final row, lay a plank upside down on the flooring as per diagram with the tongue side close to wall. Take another plank and place it right on top of the previous row and use it as a ruler. Don't forget to allow room for spacers. Cut the plank and attach into position.**



**8 The gap between the bottom of a door and the vinyl flooring should be 1cm height. To trim door frames, turn a plank upside down. Place it next to the door frame as per diagram. Use a handsaw and cut away the necessary height so that the planks can slide easily underneath the frame.**



CERTIFIED BY  
SCS Global Services



9001:2015



14001:2015