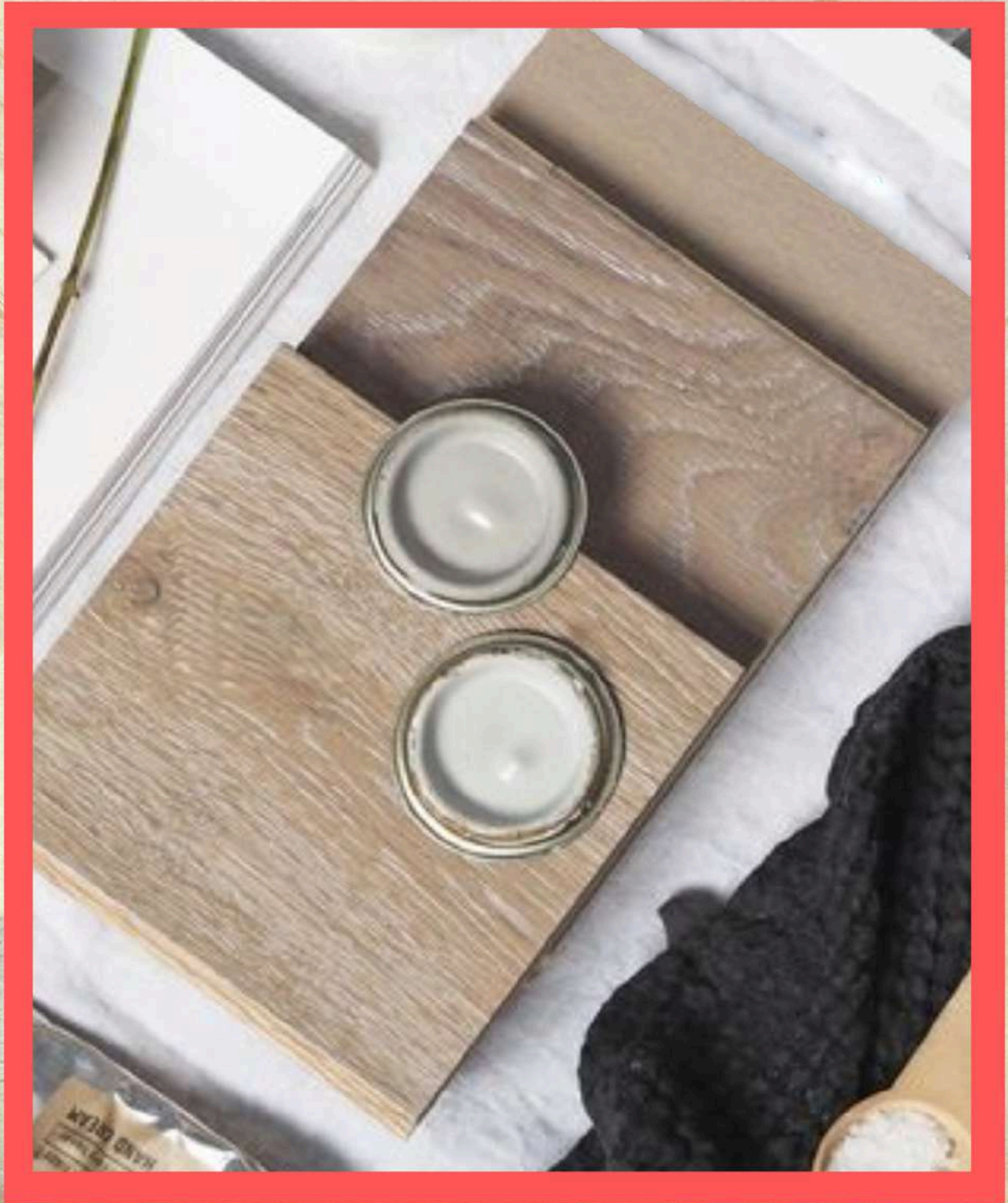


EraFlor® **PRIME Series**



ENGINEERED

STONE PLASTIC COMPOSITE FLOORING



EraFlor® is the premium in-house brand from L&T Marketing Sdn Bhd, a leading company in the Malaysian flooring industry with three decades of rich experience.

As a company committed to responsible business practices, EraFlor® SPC flooring is trusted by homeowners and architects alike and can be found in residential and commercial spaces throughout Peninsular Malaysia.

As part of our continuous mission to provide innovative and quality flooring to stakeholders and consumers, we are delighted to announce the launch of our flagship EraFlor® **PRIME Series** Engineered Stone Plastic Composite Flooring (eSPC).

VISIT OUR SHOWROOM



Located in Kota Damansara, our EraFlor SPC Flooring showrom has a complete range of colors and accessories to complement your flooring.



WHAT IS eSPC FLOORING?

eSPC - THE PRIME CHOICE

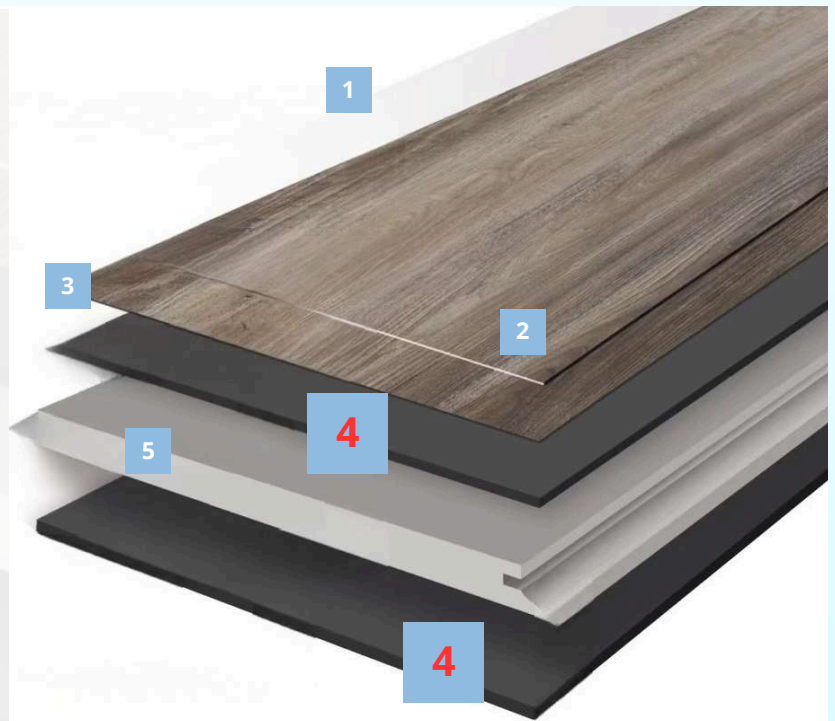
EraFlor® Engineered Stone Plastic Composite (eSPC) flooring represents a new evolution in standard SPC flooring.

EraFlor® eSPC offers the very best of floor coverings -

“Combining the *softness* of LVT tiles with the dimensional **STABILITY** of SPC flooring.”

COMPONENTS

- 1 UV COATING
- 2 CLEAR WEAR LAYER
- 3 PRINTED DECOR FILM
- 4 **LUXURY VINYL SHEET**
- 5 STONE PLASTIC CORE



1

UV COATING

Enhanced durability, easy care and maintenance.

2

CLEAR WEAR LAYER

0.5mm transparent wear layer provides excellent resistance to stain, scuffs and abrasions.

3

PRINTED DECOR FILM

High resolution printed film delivers vivid effects in realistic and natural appearance.

4

LUXURY VINYL SHEET

Vinyl sheet provides additional **flexibility** and **stability** on subfloors with **enhanced soft touch** and **acoustic** properties.

5

STONE PLASTIC CORE

100% termiteproof SPC core, made with virgin materials. Dimensional stable and durable.

eSPC ADVANTAGES

Unmatched Flexibility

Capable of bending without breaking, eSPC is more tolerant on subfloors which decreases click joints breaking.

More Stability

The additional layers of Luxury Vinyl Tiles (LVT) increases stability to the rigid core.





eSPC ADVANTAGES

Least Hollow Effect*

The flexible properties of eSPC
removes the floating feeling.

*Among all floating floor types



Quieter Flooring

The unique LVT layers provide
superior acoustic properties,
reducing noise from footsteps
and impacts.



PRIME Series

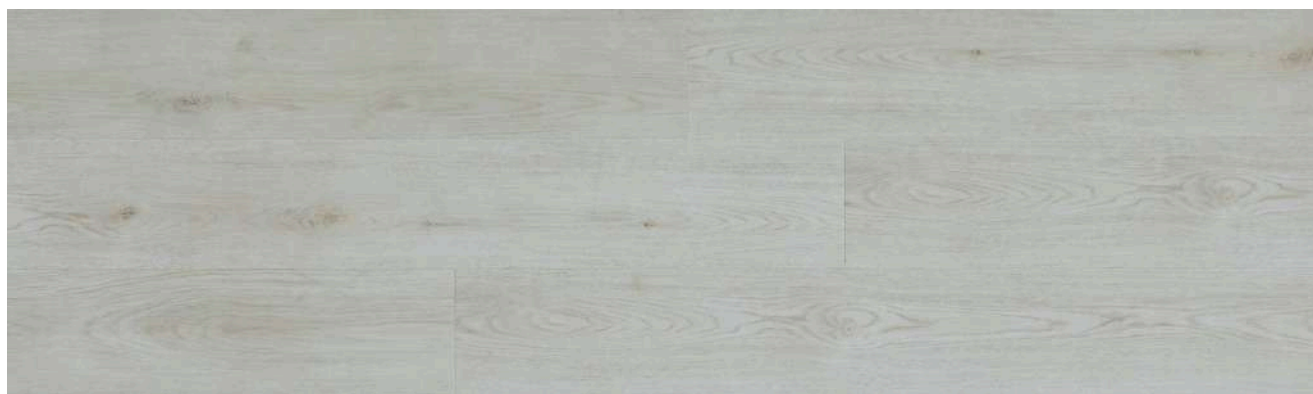
WOOD COLLECTION



ENGINEERED SPC FLOORING

WOOD COLLECTION	Specifications	Product Dimensions	1220mm x 183 x 5mm
		Panel Feature	2 Micro-V-Groove
		Surface Texture	Embossed
		Wear Layer	0.5mm
		Product Density	2000 KG/m ³
	Packaging Details	1 Box	10 pcs (24.00 sqft)
		1 Pallet	50 boxes (1200 sqft)

EEW911 NORDIC OAK



Note: Colors shown may have slight difference compared to actual products.

PANEL FEATURE : 2 Micro-V-Groove | **THICKNESS :** 5mm | **SURFACE :** Embossed
WARRANTY : 10 years for domestic application. 5 years for moderate commercial application*

RECOMMENDED ACCESSORIES

End Profile



Fuji

Adaptation



Fuji

Transition

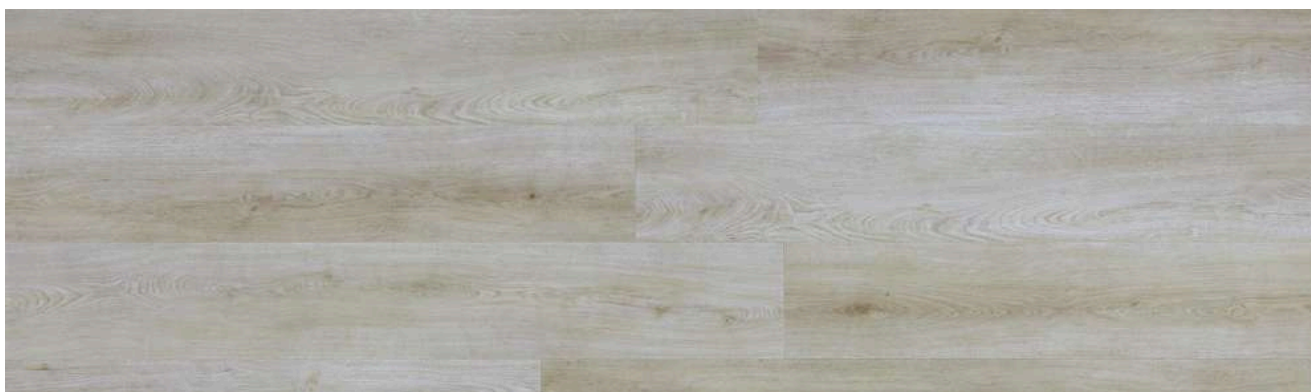


Fuji

EEW912 LUNA OAK



Note: Colors shown may have slight difference compared to actual products.



PANEL FEATURE : 2 Micro-V-Groove | **THICKNESS :** 5mm | **SURFACE :** Embossed
WARRANTY : 10 years for domestic application. 5 years for moderate commercial application*

RECOMMENDED ACCESSORIES

End Profile



Beige

Adaptation



Beige

Transition



Beige

EEW913 HELENA OAK



PANEL FEATURE : 2 Micro-V-Groove | **THICKNESS :** 5mm | **SURFACE :** Embossed
WARRANTY : 10 years for domestic application. 5 years for moderate commercial application*

RECOMMENDED ACCESSORIES

End Profile



Beige

Adaptation



Beige

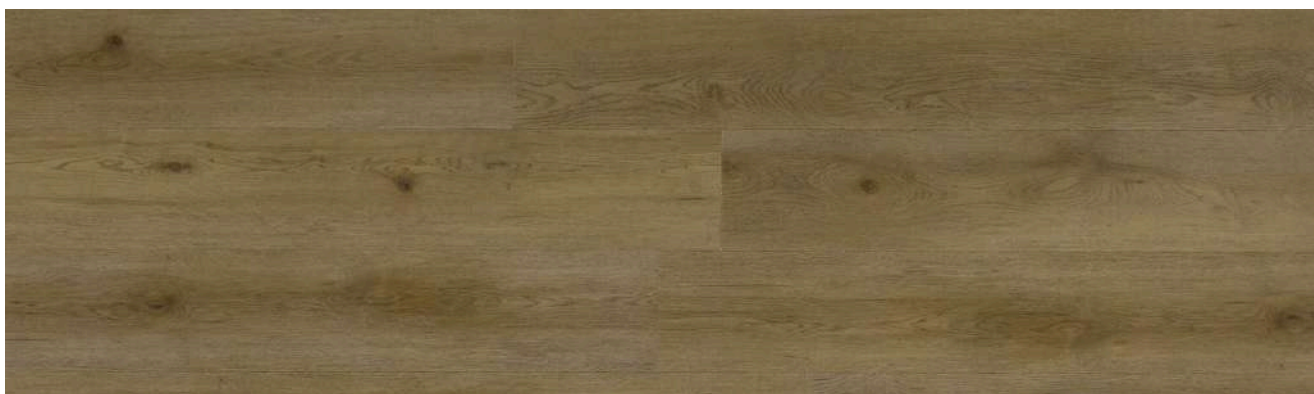
Transition



Beige

Note: Colors shown may have slight difference compared to actual products.

EEW914 TAKU OAK



PANEL FEATURE : 2 Micro-V-Groove | **THICKNESS :** 5mm | **SURFACE :** Embossed
WARRANTY : 10 years for domestic application. 5 years for moderate commercial application*

RECOMMENDED ACCESSORIES

End Profile



Golden

Adaptation



Golden

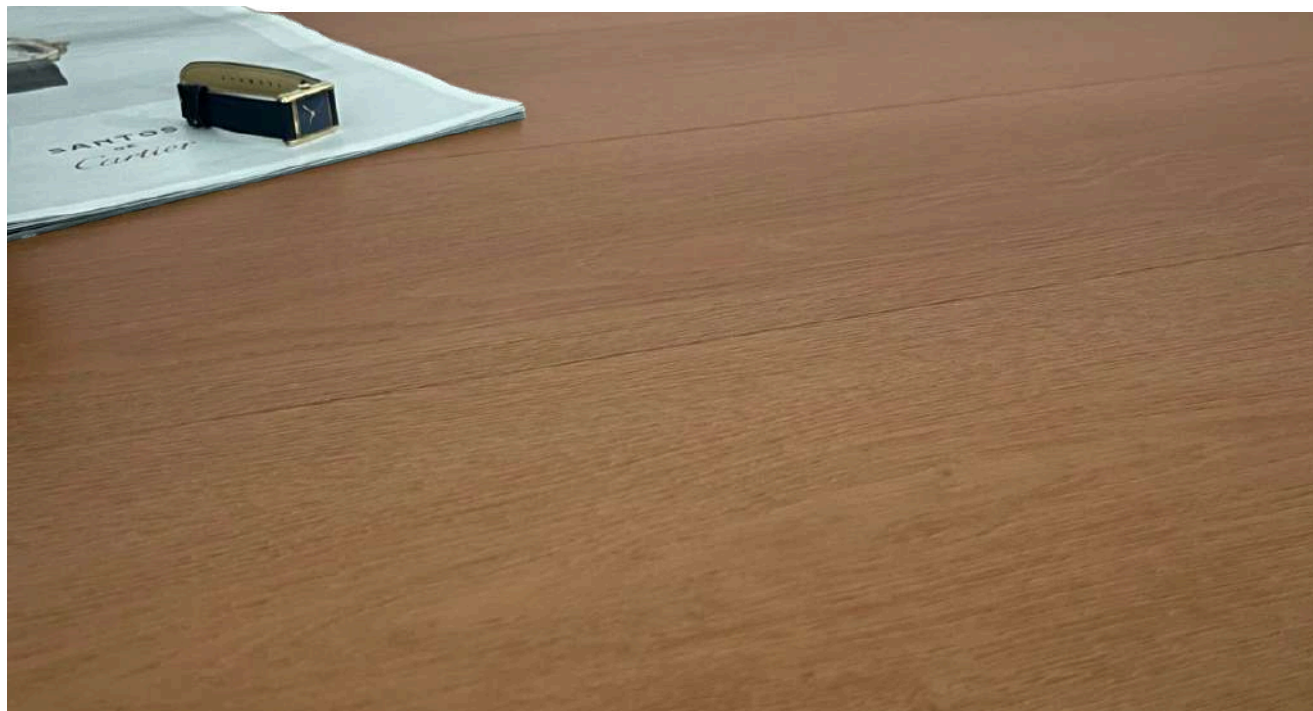
Transition



Golden

Note: Colors shown may have slight difference compared to actual products.

EEW915 EMBER OAK



Note: Colors shown may have slight difference compared to actual products.

PANEL FEATURE : 2 Micro-V-Groove | **THICKNESS :** 5mm | **SURFACE :** Embossed
WARRANTY : 10 years for domestic application. 5 years for moderate commercial application*

RECOMMENDED ACCESSORIES

End Profile



Cinnamon

Adaptation



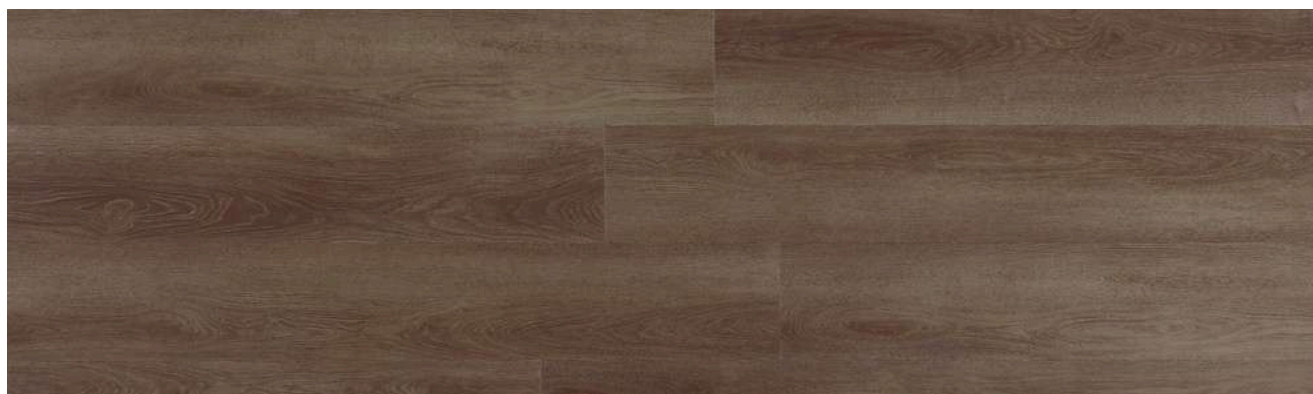
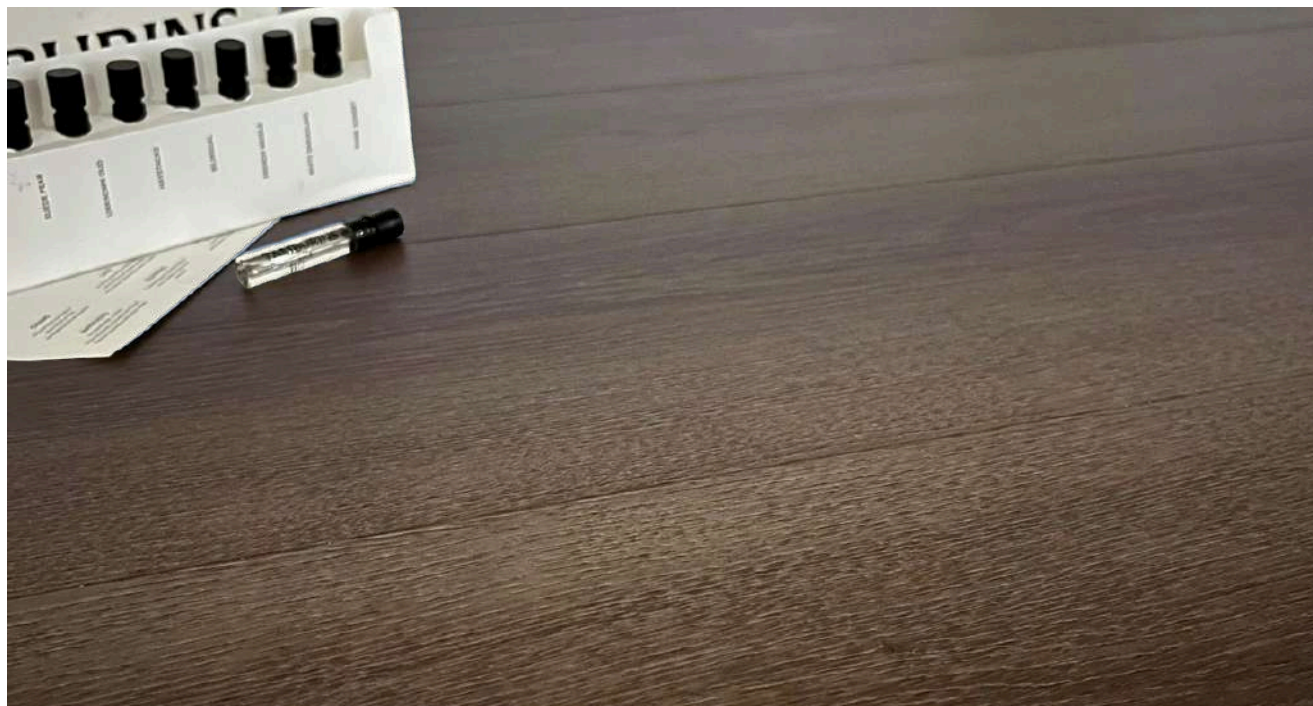
Cinnamon

Transition



Cinnamon

EEW916 AYANA OAK



PANEL FEATURE : 2 Micro-V-Groove | **THICKNESS :** 5mm | **SURFACE :** Embossed
WARRANTY : 10 years for domestic application. 5 years for moderate commercial application*

RECOMMENDED ACCESSORIES

End Profile



Burnt Umber

Adaptation



Burnt Umber

Transition



Burnt Umber

Note: Colors shown may have slight difference compared to actual products.

EraFlor® **PRIME Series**

WHY ERAFLOR?



Versatile & Flexible



Water Resistant Flooring



Lifetime Termite Warranty



Safe & Eco Friendly



Safe & Eco Friendly



Flame Retardant

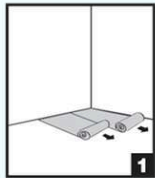


Wear Resistant

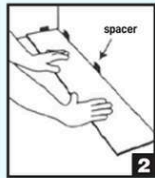


Stain Resistant

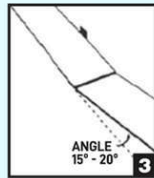
INSTALLATION INSTRUCTIONS



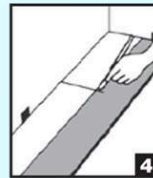
1 Prepare Floor. Underlay on the dry and leveled subfloor.



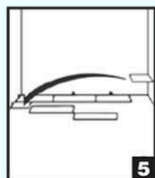
2 Start at a corner. Place first plank with tongue side facing wall. Use spacers to maintain an expansion space of 8mm between wall and flooring



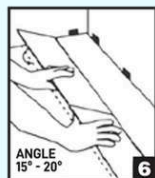
3 Insert 2nd plank's end tongue to 1st plank's end groove at an angle of 15° to 20°. The plank will click into place when lowered. Line up edges carefully. Planks should be flat to the floor.



4 For the last plank of a row, flip a full plank to its under side and place beside the row. Measure and mark the required length. Use a ruler and utility knife to score the plank and snap off. Insert as previous diagram.



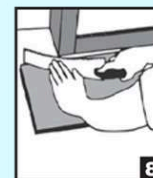
5 Begin next row with the last cut off piece from the previous row to stagger the pattern.



6 To start second row, assemble your entire row on the subfloor before attaching it to the first row. To attach, tilt and push the side tongue into the side groove of the first row at an angle of 15° to 20°. Lower and click into place lining the edges up carefully. Continue laying remaining planks in this manner.



7 To fit the final row, lay a plank upside down on the flooring as per diagram with the tongue side close to wall. Take another plank and place it right on top of the previous row and use it as a ruler. Don't forget to allow room for spacers. Cut the plank and attach into position.



8 The gap between the bottom of a door and the vinyl flooring should be 1 cm height. To trim door frames, turn a plank upside down. Place it next to the door frame as per diagram. Use a handsaw and cut away the necessary height so that the planks can slide easily underneath the frame.

WARRANTY

- **Lifetime** Termite Resistant Warranty
- **Up to 5 years*** for moderate commercial application
- **Up to 10 years*** for moderate residential application

*(Subject to stipulated terms & conditions.)

The subfloor surface must be clean from any debris, dry, smoothly screeded and must be even. Any uneven subfloor must undergo with the self - levelling process.

For more information such as sub floor preparation, site condition requirements, installation methods, maintenance requirements, etc., please refer to the EraFlor packaging.

